

# G Series Crystal



- **5mm X 7mm X 4 Pads Ceramic Package**
- **Wide Frequency Range**
- **Tight Tolerance and Stability**
- **Tape and Reel Packaging**



Frequency Range	6.000MHz to 100.000MHz
Frequency Tolerance / Stability	(See Part Number Guide for Options)
Operating Temperature Range	(See Part Number Guide for Options)
Storage Temperature	-40°C to +85°C
Aging	±5ppm / first year Maximum
Shunt Capacitance	7pF Maximum
Load Capacitance	(See Part Number Guide for Options)
Equivalent Series Resistance	See ESR Chart
Mode of Operation	Fundamental or 3 <sup>rd</sup> OT
Drive Level	100µW Typical
Insulation Resistance	500 Megaohms Minimum at 100VDC

## Environmental & Mechanical Detail

Shock	MIL-STD-883, Method 2002 Cond B
Solderability	MIL-STD-883, Method 2003
Solvent Resistance	MIL-STD-202, Method 215
Vibration	MIL-STD-883, Method 2007, Cond A
Gross Leak Test	MIL-STD-883, Method 1014, Cond C
Fine Leak Test	MIL-STD-883, Method 1014, Cond A2
MSL	Level 1 per IPC/JEDEC J-STD 20

## Marking Detail

Line 1: MXX.XXX
XX.XXX = Frequency in MHz
Line 2: SYMCCL or SSYMCCL
S or SS = Internal Code
YM = Numerical Date Code (Year/ Month)
CC = Crystal Parameters Code
L = Denotes RoHS Compliant

**QUALITY SYSTEM  
CERTIFIED  
= ISO 9001 =**

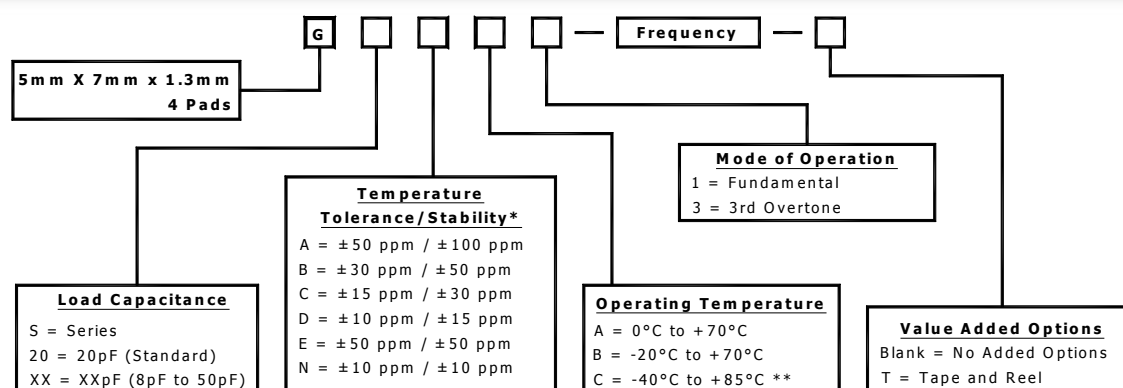


Revision: 12/03/17 K

# ESR Chart

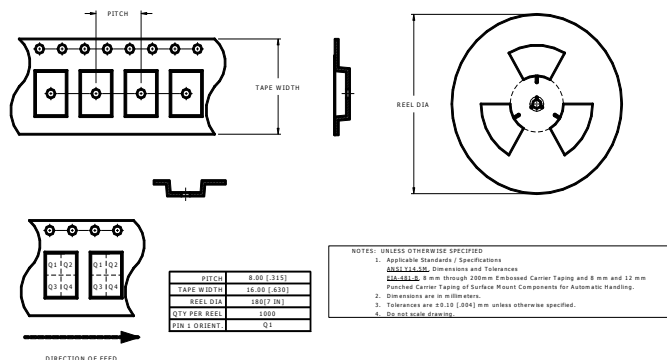
Frequency Range	ESR (Ohms)	Mode / Cut
6.000MHZ to 6.999MHZ	120 Max	Fund / AT
7.000MHZ to 7.999MHZ	110 Max	Fund / AT
8.000MHZ to 8.999MHZ	100 Max	Fund / AT
9.000MHZ to 9.999MHZ	90 Max	Fund / AT
10.000MHZ to 10.999MHZ	80 Max	Fund / AT
11.000MHZ to 11.999MHZ	70 Max	Fund / AT
12.000MHZ to 15.999MHZ	60 Max	Fund / AT
16.000MHZ to 39.999MHZ	40 Max	Fund / AT
40.000MHZ to 83.999MHZ	70 Max	3 <sup>rd</sup> OT / AT
84.000MHZ to 100.000MHZ	60 Max	3 <sup>rd</sup> OT / AT

## Part Number Guide

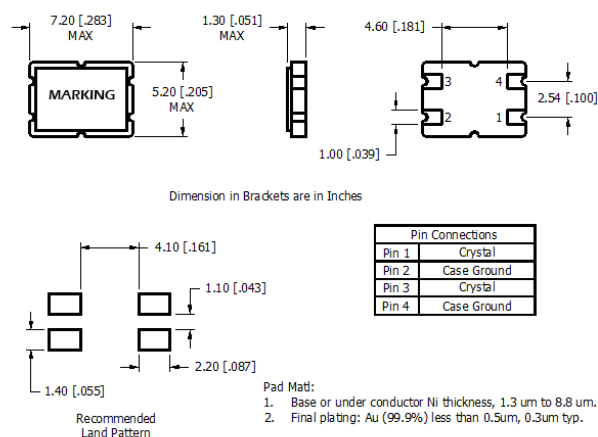


\* Please consult with MMD sales department for any other parameters or options.  
\*\* Not all Frequency Tolerance/Stability options available at this temperature range.

## Tape and Reel



## Mechanical Details



**QUALITY SYSTEM  
CERTIFIED  
= ISO 9001 =**



Revision: 12/03/17 K